



DIBAF



EDUCATION AND TRAINING
Supporting education and training in Europe and beyond



MEDFOR SUMMER EVENT – 2018

Date

From July 23th to July 28th, 2018

Location

Centro Studi Alpino (CSALP)

Via Rovigo, 7

38050 Pieve Tesino (Trento), Italy



PROGRAMME OVERVIEW

- 24.07:** Presentation of MEDFOR MSc student's Master Thesis (1st group)
Visit the *Arboretum* - 1st virtual collection of plants
- 25.07:** Presentation of MEDFOR MSc student's Master Thesis (2nd group)
Visit Trento Science Museum and city centre
- 26.07:** Field visit 1 - Silviculture of *Fagus-Carpinus* broadleaf forests & “Arte Sella”
The student’s experience on MEDFOR – by C. Tavares
- 27.07:** Field visit 2 - Silviculture of high altitude forest & pasture-grassland
Building on Natural Capital for innovation and future – by M. Masiero

Who can participate?

Students regularly enrolled at the second year of the MSc course MEDFOR, in one of the partner Universities.



PROGRAMME

23.07 Monday:

- Travelling
- Reception at CSALP

20:00 Welcome dinner (Restaurant Cima d'Asta)

24.07 Tuesday:

09:00 Short introduction of the 3rd edition of MEDFOR summer event

09:20 **Session 1:** Presentation of MEDFOR MSc student's Master Thesis
(15 min each + 5 min questions)

1. Abdullah-Al Mamun. *Intra-specific differences of non-structural carbon investment and DBH variability of Pinus nigra in common garden experiment*
2. Alisa Reiss. *Factors affecting being a NWFP picker in Spain: a household analysis*
3. Andrii Khomiuk. *Suitability of vegetation indices derived from Sentinel-2 imagery to model severity of forest damage caused by snow storms. Case study of the Aleppo pine-dominated forests in the Valencian Community.*
4. Babla Mohajan. *Relationship between leaf phenology and anatomical traits of xylem in Beech*

10:40 – 11:20 Coffee/Air break

5. Bikash Kharel. *The use of barcoding sequences for the construction of phylogenetic relationships in the Euphorbiaceae'.*
6. Daniel Hagos Berhe. *Feasibility of NIR Spectroscopy in Classifying Pine Nut Species*
7. Danilo Reis Gonçalves. *Next generation sequencing (NGS) and quantitative PCR (qPCR) as tools to detect Fusarium circinatum in different pine species.*
8. Ishan Kanungo. *Understanding human utilization patterns, impacts on endangered tree species and conservation options in the walnut fruit and nut forests of south-western Kyrgyzstan*

12:40 – 14:20 Lunch break

9. Koffi Dodji Noumonvi. *Estimation of carbon fluxes from eddy covariance data and satellite-derived vegetation indices in a karst grassland*

10. Md Ekramul Haque. *Effects of Collembolan (Springtails) on Soil Aggregate formation and Stabilization: A trait-based Approach.*
11. Motaz Abdelaziz. *Study of the distribution of Terfezia claveryi Chatin soil and roots of different host plants in the Region of Murcia*
12. Nayeli Alejandra Estevez. *Preliminary title: Multi-Temporal Analysis of Post-Fire Vegetation Recovery after the 2007 Zaca Fire in California*

16:00 Introduction to the Alpine forest vegetation (medium altitude) and of the Plant recognition activity (a possible group work/competition to create a common archive of photos)

17:30 Visit the *Arboretum* - 1st virtual collection of plants

20:00 *Dinner*

25.07 Wednesday:

09:20 Session 2: Presentation of MEDFOR MSc student's Master Thesis
(15 min each + 5 min questions)

13. Noélia Lopez. *Assessing ecosystem functioning on Mediterranean forests in the context of global change: the case study of Mont Ventoux (France)*”
14. Peter Bufeh. *Payment for Environmental services and Institutional Arrangements: Assessing the Replicability of some successful schemes in Cameroon*
15. Samson Omokaro Osadolor. *Isolation and characterization of monoterpene synthase genes from Pinus nigra subsp laricio in Calabria*

10:20 – 11:00 *Coffee/Air break*

16. Siba Ghadban. *Forest management promotion for climate change mitigation.*
17. Susana Drevrek. *Leaf morphology characteristics of tree species for particulate matter deposition in an industrial city of central italy*”
18. Sushmita Rani Saha. *Evaluation of the use of Biochar to remove heavy metals from road runoff.*

Final remarks and group photo

12:30 – 14:00 *Lunch break*

14:30 Transfer to Trento and visit the Science Museum (www.muse.it)

18:30 Visit the historical centre of Trento

19:30 Social dinner in the “*Antica Birreria Pedavena*”

22:00 Transfer to Pieve tesino

26.07 Thursday:

08:30 Field visit 1: Silviculture of *Fagus-Carpinus* broadleaf forests - “Arte Sella” (www.artesella.it) - 2nd virtual collection of plants

17:30 Session 3: The student’s experience on MEDfOR – by Catarina Tavares

19:00 Introduction to the Alpine vegetation (high altitude)

20:00 *Dinner*

27.07 Friday:

08:30 Field visit 2: Silviculture of *Picea-Abies* and *Picea-Larix* conifer forests – pastures and natural grasslands – 3rd virtual collection of plants

17:30 Session 4:

Building on Natural Capital for innovation and future opportunities: outcomes and lessons learnt from the first nature accelerator – by Mauro Masiero

19:00 Plant recognition: analysis of results

20:00 *Dinner*

28.07 Saturday: Travelling

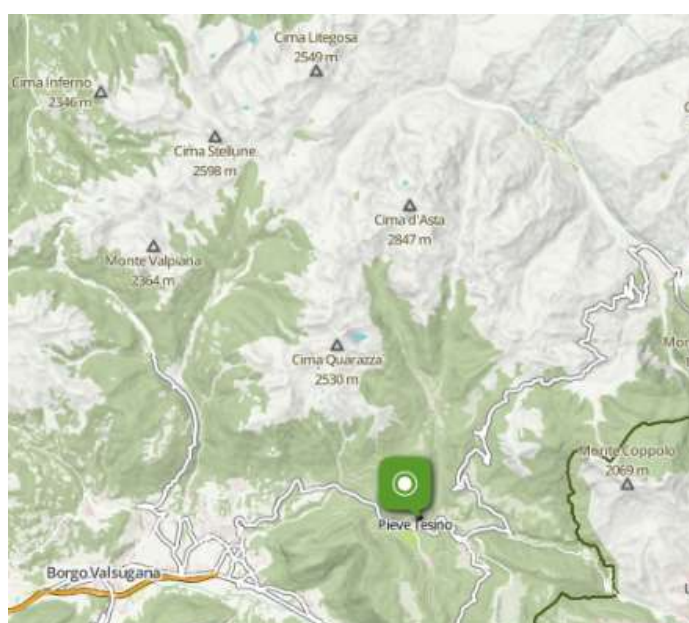
08:30 Bus transfer to the Strigno train station



PRACTICAL INFORMATION

LOCATION

The MEDfOR summer event will be held in **Pieve Tesino**, a small village in Trento Province (North-Eastern Italy), at the Alpine Research Center of the University of Tuscia. The building has been recently restored to host meetings and training courses and it is provided with conference room, meeting rooms, guest rooms and WiFi connection.

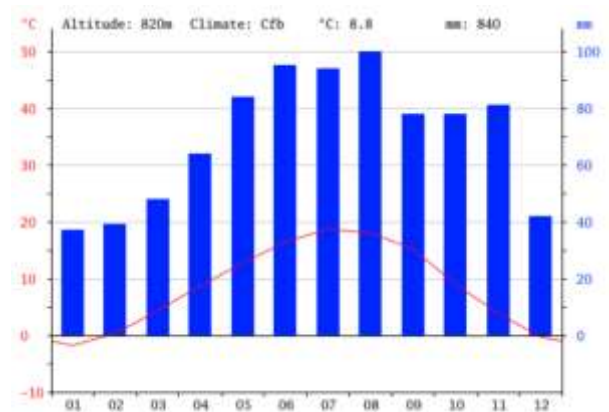


Pieve Tesino (altitude 843 m asl) is situated on the southern sides of the woody Mount Silana, which protects it from the northern winds. *The town's name refers to the presence, on-site, of a parish church in the valley. Hometown of the famous Italian statesman Alcide De Gasperi, it is a popular tourist destination, especially during summer. Even though it was one of the warm fronts during the First World War and suffered for this reason, considerable damage, the town still retains its historic core with beautiful medieval buildings and portals, some of which date back even to the XV century. The plateau of Tesino was inhabited since the Bronze Age, as attested by the finds unearthed in the district of Sant'Ippolito and on the hill of San Sebastian: Later the area was inhabited by the Reti, whose culture was absorbed by the Latin one of the*

subsequent Roman domain. In 50 A.D. the Romans started the construction of the Via Claudia Augusta Altinate and, along its route, numerous fortifications (castrum) were built. Around these "castra", developed some "vici", the first urban cores of the future community centers in which the original local populations and the Roman soldiers started to coexist. After the fall of the Roman Empire, the territories were conquered by the Lombards, who guaranteed a period of peace and prosperity to local populations. Defeated by the troops of Charles the Great, Pieve Tesino, like all the other nearby localities, was assigned to a local lord under the direct rule of the Bishop of Feltre.

CLIMATE

The climate here is mild, and generally warm and temperate. There is a great deal of rainfall in Pieve Tesino, even in the driest month. This location is classified as Cfb by Köppen and Geiger. The average annual temperature in Pieve Tesino is 8.8 °C. About 840 mm of precipitation falls annually.



In summer, the average daily minimum temperatures are around 15 °C and the daily maximum around 26 °C. Nevertheless, during the day the weather conditions can change quickly, as typical of the mountain regions.

STUDENT ACCOMODATION - The Center provides accommodation in guest rooms with four beds and a bathroom.



The bedding and the towels will be provided.

GUEST ACCOMODATION – Single, double or family room with internal bathroom are available for teachers and other guests.



RESTURANT AND ADDITIONAL ACCOMODATION – The local Resturant/Hotel Cima d’Asta will provide lunches and dinners; additional rooms can be reserved for the teaching staff.

(http://www.hotelcimadasta.it/en_index.php)

PERSONAL EQUIPMENT

Considering the mountain environment and the field activities also at higher altitudes, the appropriate personal equipment should include hiking boots, waterproof jacket and pullover. A small trekking backpack is required to put pullover, jacket and the field lunch.

TRAVEL

From Viterbo (University of Tuscia MEDfOR students) a minivan will depart on Monday and return on Saturday.

Arriving from other places, Pieve Tesino (Trento Province - TN) can be reached as described following.

Traveling by flight:

Venice Airport "Marco Polo" (<http://www.veniceairport.it/en/>) is the main International Airport in the region

- from Venice Airport to Venice Piazzale Roma / S. Lucia Train Station by shuttle bus (20 min) – see time table at http://www.atvo.it/allegati/aeroporti/linea_35_dal_25.03_al_27.10.2018.pdf
- from Venezia S. Lucia station to Strigno station by train (about 2:30 hrs of travel) with 1 change in Bassano del Grappa (<http://www.trenitalia.com/tcom-en>). We

will organise a shuttle service from the Strigno train station to Pieve Tesino. Please, inform us about your arrival time.

An alternative for low cost flight companies is the International Airport of Bergamo (Orio al Serio), which is connected by Flixbus (2:45 hrs) to Trento. From Trento see the following instructions. Please check carefully the time tables (very limited options).

by Train:

The closest local railway station is Strigno, a stop in the line connecting Trento to Bassano del Grappa. Bassano del Grappa can be reached by train, also from Padua or Venice. You can find the timetable and buy the thicketts on the web at: <http://www.trenitalia.com/tcom-en>. We will organise a shuttle service from Strigno train station to Pieve Tesino. Please, inform us about your arrival time.

by Bus:

Public bus service regularly connects Pieve Tesino with Trento (central train station for high speed train) and Borgo Valsugana (local train station to reach Trento or Venice/Padua). You can find the lines map and the time table on the web at: <http://www.ttesercizio.it/?l=en>