

MEDFOR SUMMER EVENT - 2017

Date

From July 10th to July 14th 2017

Location

Centro Studi Alpino (CSALP)

Via Rovigo, 7

38050 Pieve Tesino (Trento), Italy



Who can participate?

Students regularly enrolled in the MSc course MEDFOR in one of the partner Universities, and University of Tuscia ERASMUS+ students from University of Sarajevo.

GENERAL PROGRAMME¹

10.07 Monday:

- Travelling
- Reception at CSALP

20:00 *Welcome dinner* (Restaurant Cima d'Asta)

11.07 Tuesday:

09:00 Presentation of MEDFOR MSc students's Master Thesis

- Bawinabadi Bagaram. *Assessing biodiversity related variables by unmanned aerial vehicle (UAV) remote sensing*
- Faqrul Islam Chowdhury. *Meta-analysis on the drivers of nocturnal stomatal conductance in plants*
- Farah Tell. *Forests for people, people for forests: Studying the importance of Jordan's public forests for citizens' wellbeing and the potential of engaging Syrian refugees in forestry projects*

10:30 – 11:00 *Coffee break*

¹ Version 3

- Kisa Fatima. *Role of Mediterranean Forests in Sectors of Green Economy*
- Marta Felip Ruiz. *Validation of the method used by the SUBER model for the estimation of extracted cork dry weight with more and less than 9 years of growth*
- Muha Abdullah Al Pavel. *Climate impact on early growth of Pinus pinaster Ait.*

12:30 – 14:00 *Lunch break and relaxing time*

- Mohammad Maruf Billah: *The relationship between climate and tree growth rate on various tree species across Canada and USA with focus on divergence decadal climate oscillations*
- Sidra Ijaz Khan. *Exploring the spatio-temporal dynamics of golcuk planning unit over 43 years and its implication to ecosystem management planning and the international conventions*
- Lyazzat Syrlaybayeva.

16:00 Walking in the *Arboretum* and visit the “Garden of Europe”

17:30 Visit the Museum “*House of Alcide De Gasperi*” (the last century European history and the first steps of the political Europe) and “*Museo per Via*” (prints and families migration at the beginning of the nineteenth century)

19:30 *Dinner*

12.07 Wednesday:

08:30 Field visit: *Fagus-Carpinus* forests & “Arte Sella”

17:30 Special session: Social communication and Environmental awareness (*by Green Mind University Student Network*)

17:00 MEDfOR Steering Committee²

19:30 *Dinner*

² *Restricted to the MEDfOR Consortium partners*

13.07 Thursday:

08:30 Field visit: altitudinal gradient and natural resource management (*Picea-Abies* and *Picea-Larix* forests, Alpine pastures and grasslands)

16:00 Special Session: Silviculture and forest management in the Dinaric Alps (Bosnia-Herzegovina region) – Lecture's from teaching staff of the *University of Sarajevo*

- *Prof. Ahmet Lojo* - Silvicultural management of uneven aged mixed forests (beech-fir-spruce) in the Bosnia and Herzegovina Dinaric Alps according to the close to nature management system
- *Prof. Aida Ibrahimspahic* - An overview of research on the structural and production characteristics of uneven aged multilayer forests of beech-fir-spruce in Bosnia and Herzegovina
- *Prof. Besim Balic & Dr. Admir Advic* - An overview of National forest inventory in Bosnia and Herzegovina

19:30 *Dinner*

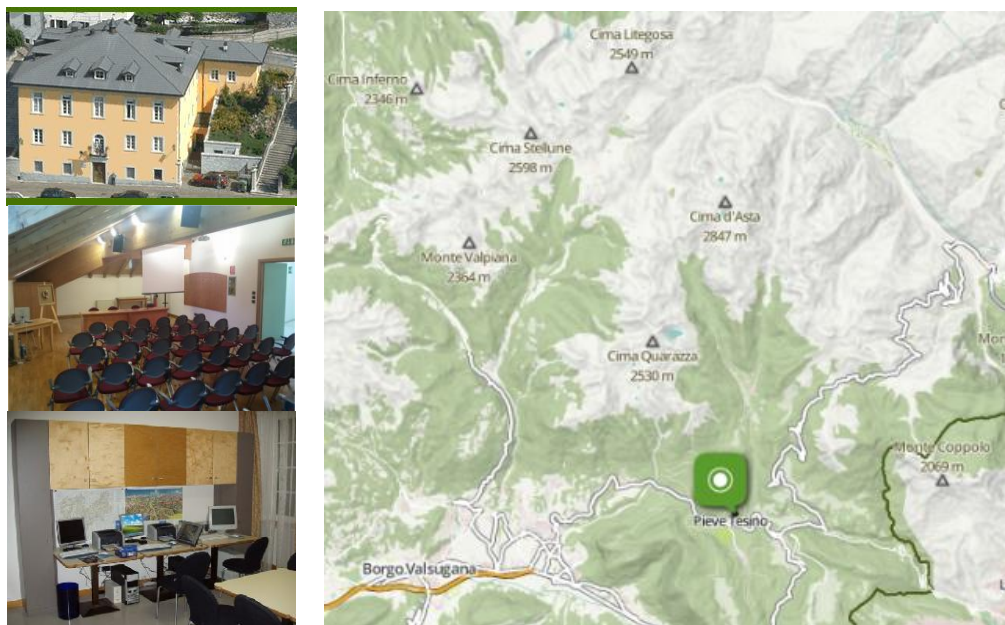
14.07 Friday: Travelling

08:30 Bus transfer to the Strigno train station

PRACTICAL INFORMATION

LOCATION

The MEDfOR summer event will be held in **Pieve Tesino**, a small village in Trento Province (North-Eastern Italy), at the Alpine Research Center of the University of Tuscia. The building has been recently restored to host meetings and training courses and it is provided with conference room, meeting rooms, guest rooms and WiFi connection.

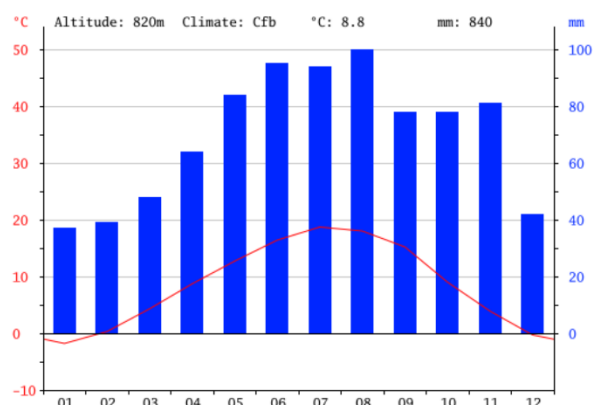


Pieve Tesino (altitude 843 m asl) is situated on the southern sides of the woody Mount Silana, which protects it from the northern winds. *The town's name refers to the presence, on-site, of a parish church in the valley. Hometown of the famous Italian statesman Alcide De Gasperi, it is a popular tourist destination, especially during summer. Even though it was one of the warm fronts during the First World War and suffered for this reason, considerable damage, the town still retains its historic core with beautiful medieval buildings and portals, some of which date back even to the XV century. The plateau of Tesino was inhabited since the Bronze Age, as attested by the finds unearthed in the district of Sant'Ippolito and on the hill of San Sebastian: Later the area was inhabited by the Reti, whose culture was absorbed by the Latin one of the subsequent Roman domain. In 50 A.D. the Romans started the construction of the Via Claudia Augusta Altinate and, along its route, numerous fortifications (castrum) were built. Around these "castra", developed some "vici", the first urban cores of the future community centers in which the original local populations and the Roman soldiers started to coexist. After the fall of the Roman Empire, the territories were conquered by the Lombards, who guaranteed a period of peace and prosperity to local populations. Defeated by the troops of Charles the Great, Pieve Tesino, like all the other nearby localities, was assigned to a local lord under the direct rule of the Bishop of Feltre.*

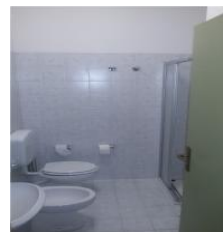
CLIMATE

The climate here is mild, and generally warm and temperate. There is a great deal of rainfall in Pieve Tesino, even in the driest month. This location is classified as Cfb by Köppen and Geiger. The average annual temperature in Pieve Tesino is 8.8 °C. About 840 mm of precipitation falls annually.

In summer, the average daily minimum temperatures are around 15 °C and the daily maximum around 26 °C. Nevertheless, during the day the weather conditions can change quickly, as typical of the mountain regions.



STUDENT ACCOMODATION - The Center provides accommodation in guest rooms with four beds and a bathroom.



The bedding and the towels will be provided.

GUEST ACCOMODATION – Single, double or family room with internal bathroom are available for teachers and other guests.

RESTURANT AND ADDITIONAL ACCOMODATION – The local Resturant/Hotel Cima d’Asta will provide lunches and dinners; additional rooms can be reserved for the teaching staff.

(http://www.hotelcimadasta.it/en_index.php)



PERSONAL EQUIPMENT

Considering the mountain environment and the field activities also at higher altitudes, the appropriate personal equipment should include hiking boots, waterproof jacket and pullover. A small backpack should be use to put the jacket and the field lunch.

TRAVEL

From Viterbo (University of Tuscia) a bus will depart on Monday and return on Friday. Arriving from other places, Pieve Tesino (Trento Province - TN) can be reached:

by Air:

Venice Airport "Marco Polo" (<http://www.veniceairport.it/>) is the main International Airport in the region

- from Venice Airport to Venice Piazzale Roma / S. Lucia Train Station by shuttle bus (20 min) – see time table at http://www.atvo.it/allegati/aeroporti/linea_35_dal_26.03.2017_al_28.10.2017.pdf
- from Venezia S. Lucia station to Strigno station by train (about 2:30 hrs of travel) with 1 change in Bassano del Grappa (<http://www.trenitalia.com/tcom-en>). We will organise a shuttle service from the Strigno train station to Pieve Tesino. Please, inform us about your arrival time.

by Train:

The closest local railway station is Strigno, a stop in the line connecting Trento to Bassano del Grappa. Bassano del Grappa can also be reached by train from Padua or Venice. You can find the timetable and buy the thicketts on the web at: <http://www.trenitalia.com/tcom-en>. We will organise a shuttle service from Strigno train station to Pieve Tesino. Please, inform us about your arrival time.

by Bus:

Public bus service regularly connects Pieve Tesino with Trento (central train station for high speed train) and Borgo Valsugana (local train station to reach Trento or Venice/Padua). You can find the lines map and the time table on the web at: <http://www.ttesercizio.it/>